

MINERAL QUILTS ROCK

*by WAQA City and
Country Quilters*

Mount Magnet Astro
Rocks Fest 2021

WAQA City and Country Quilters is a Small Group of the West Australian Quilters' Association (WAQA). Their Mineral Quilts Rock Exhibition was created for the Mount Magnet Astro Rocks Fest, 17-19 September 2021. Guest art-quilter Catherine Jensen contributed two quilts.

Front cover: Ochres by Roberta Chantler, rendered image

Index

Mineral Quilts Rock Collection

Ochres by Roberta Chantler	4
Rock Collector, Western Bowerbird (Chlamydera guttata), by Val York	5
Exploration and Mining, Core Samples by Roberta Chantler	6
Calcrete Aquifer by Jan Fisher	7
Crossroads by Julie McAllister	8
BIF (Bounded Iron Formation) by Robyn Clout	9
Banded Ironstone by Lana Lefroy	10
London Bridge by Lana Lefroy	11
The Granites with Fairy Martins and Parakeelya by Elizabeth Humphreys	12
Quartz and Everlastings (Meeline Station) by Elizabeth Humphreys	13
Orbicules 2 by Pat Forster	14
Rock Outcrop – Murchison, by Meg Cowey	15
Gorge Sunset by Catherine Jensen	16
Murchison Rockhole by Catherine Jensen	18
Strata Story by Meg Cowey ,	19
Southern Cross over Granite by Elizabeth Humphreys	20

Small Items

Small quilts, Miniature quilts, Zippered purses, Photo Cards, Wax Wraps	21
---	----

2021 Mount Magnet Quilt Project Outcomes	26
---	-----------

The Making of a Quilt - Rock Outcrop by Meg Cowey	27
--	-----------

Mount Magnet Astro Fest Poster	29
---	-----------



Ochres by Roberta Chantler, 81 cm x 42 cm.

At first glance, rock formations may appear monochrome, though on closer inspection you will see many varied colours exist, forming patterns and lines that are otherwise missed.

Cotton and silk fabrics and lace, folded, layered, quilted onto a backing, wrapped over an artist's canvas.





Rock Collector, Western Bowerbird (*Chlamydera guttata*), by Val York, Busselton

52 cm x 48 cm. Male decorating a bower with pebbles and green berries. Mount Magnet.

Cotton fabrics with thread painting and applique. Embellished with braid, cord, string, lace ribbon, pebbles, springs, feathers, to create a plethora of treasures. Hand and machine quilted.





Exploration and Mining, Core Samples, by Roberta Chantler, 80 cm x 40 cm

The Murchison district is a proven Gold region having produced Gold for over 100 years. Exploration continues to expand reserves. Here, core samples are shown, waiting examination by a Geologist.

Hand-dyed fabrics, assorted other fabrics needle-felted to represent the core samples. Machine pieced, raw-edge applique, free-motion quilted to provide background patterns and textures.





Calcrete Aquifer by Jan Fisher, Esperance

82 cm wide x 80 cm high. Hidden within the Yilgarn Plateau are hundreds of watery 'islands' surrounded by an ocean of rock. These isolated calcrete aquifers contain ecosystems of relictual fauna that slipped into the ground as the oceans and waterways of Tethys and Gondwana slowly dried. Each calcrete aquifer holds its own diverse creatures that are slightly different across the range of these discrete reservoirs. The stygofauna, as they are known, are represented in my quilt within the convoluted rock below the surface; within a world that we struggle to imagine.

100% Cotton fabrics, including some printed with small creatures. Machine pieced (patchwork) background. Machine applique rock contours. Machine quilted with a variety of cotton, polyester and metallic threads, shiny and dull, for interest on close inspection, in a variety of quilting patterns including text.





Crossroads by Julie McAllister, 76 cm x 46 cm

Mount Magnet township dissected by its two major roads. The snakes are stylised magnets and the quilting represents magnetic fields.

Fabric and wadding 100% cotton. Layered teabag papers used as background. Snakes appliquéd with faux trapunto under them, edges couched with synthetic thread. Stitched roads with shiny fabric paint on road surface.

In 1854, Robert Austin, a colonial explorer, discovered, when near the present town of Mount Magnet, that magnetic rocks interfered with his compass. He named nearby hills Mount Magnet and West Mount Magnet. West Mount Magnet, which towers over the town ... was later given back its Aboriginal name, Warrambo meaning camping place. https://www.westernaustralia.com/us/Destination/Mount_Magnet/





BIF by Robyn Clout, 77 cm (h) x 78 cm (w)

This quilt design was inspired by the weathered colours of the local BIF (banded iron formation).

Banded iron comprises layers of sedimentary rock, the red ones rich in iron and others iron-poor. They can be extensive – hundreds of metres thick and kilometres laterally. They are thought to have formed in sea water, where oxygen combined with dissolved iron, and the resulting oxides precipitated out. The bands are from successive precipitations up to about 3700 million years ago. Most of the iron ore mined in the world is from banded iron formations.

https://en.wikipedia.org/wiki/Banded_iron_formation

Cotton fabrics, with colours chosen to suit the red-iron of the rock and for drama, cut intentionally and machine-pieced to create a composition that draws the eye and surprises.





Banded Ironstone by Lana Lefroy, Yuinmery Station, Sandstone

81 cm x 41 cm. Inspired by a hill on Dandaraga Station, near Sandstone. My father, a local pastoralist at the time, made gemstones from this rock in the 1970's and some of these are included on this quilt. Banded Ironstone is sedimentary rock of alternating layers of iron oxides and iron-poor chert. They are about 3,7000 million years old and thought to record the oxygenation of the Earth's oceans.

100% cotton fabrics and wadding. Cotton and rayon threads. Fabrics free-cut and machine pieced. White fabric layered, stitched and cut for rounds of everlasting-daisy petals, only their centres sewn to the background, for a 3-D effect. Embellished with polished gemstones made in the 1970's, by Frank Murray (dec). Machine quilted.





London Bridge by Lana Lefroy, Yuinmery Station, Sandstone, 76.5 cm x 61.5 cm

Inspired by the iconic natural breakaway formation near the town of Sandstone, known as London Bridge. The 350-million-year-old weathered basalt range is about 800m long and 3-10 metres high.

100% cotton fabrics and wadding. Netting. Cotton and rayon threads. Machine pieced, free machine applique, machine quilted. From a photo by Jan Fisher with permission.





The Granites with Fairy Martins and Parakeelya by Elizabeth Humphreys, 39 cm x 79 cm

Hand appliqué and embroidery. Hand dyed and painted fabrics. Sari silk and hand dyed cotton gauze. Hand and machine quilted. Inspired by my own photo.

The Granites are nine kilometres north of Mount Magnet and have strong cultural significance to the Badimia people. Engraved and painted rock art is scattered amongst the granite boulders and has been dated at 9,000 years old. There are caves in the white granite, and a gnamma hole on one of the shallow slopes.

The Fairy Martin is sometimes called the Bottle Swallow because its nest, made from tiny pellets of mud or clay, is bottle shaped. There are some depicted on the quilt, under the granite overhang. The entrance to each nest is via a horizontal spout.

Parakeelya (*calandrinia balonensis*, pink flowers) is an annual/biennial succulent herb native to arid and semi-arid regions of Australia. Aboriginal people made use of the roots and leaves for food, and ground the seeds down to a paste to use in cooking.

Purple Mulla (*Ptilotus exaltatus*), is another annual herb, with fluffy conical heads up to 10 cm long. The plant grows up to 1.2 m tall. Mulla is its Aboriginal name.





Quartz and Everlastings (Meeline Station) by Elizabeth Humphreys, 39.5 cm x 80 cm

Hand painted fabric. Sari silk and cotton. Hand embroidery and appliqué. Machine quilted. Inspired by a photo by Karen Morrissey of Meeline Station, with her permission.

Meeline Station covers 427,880 acres. It is located just off the Meeline Narndee Road, 59 km from Mount Magnet and about 450 km north-northeast from Perth; the nearest ocean is the Indian Ocean about 340km west-southwest of Meeline.





Orbicules 2 by Pat Forster, 82 cm x 82 cm

Cotton and cotton-mix fabrics, some with metallic printing. Machine applique and reverse-applique, outer rings of orbs trapuntoed to raise them, free motion quilted with polyester-cotton and metallic threads. The metallic thread represents mica that is throughout the orbs.

The design was inspired by orbicular granite found on Boogardie Station in the Shire of Mount Magnet. The quilt represents, in the abstract, a tile of orbicular granite. In reality, the orbs are sphere-like and have varying numbers of thin to wider layers, in varying shades of grey (pale to dark). All have a dark outer layer. The surrounding granite is greyer in appearance than the pink-grey fabric used. Availability of sparkly fabric to represent the sparkly rock and of fabric printed like granite determined the colours in the quilt.





Rock Outcrop by Meg Cowey, 78 cm x 39 cm

The red rock of the Murchison glows in the setting sun.

Cotton and silk fabrics, dull and shiny, some with printed patterns or woven textures, cut to create contours of the rock face, and to create the impression of prominence and depth. Raw edge appliqué. Bamboo wadding. Free-motion quilting in differing patterns to provide differing textures.

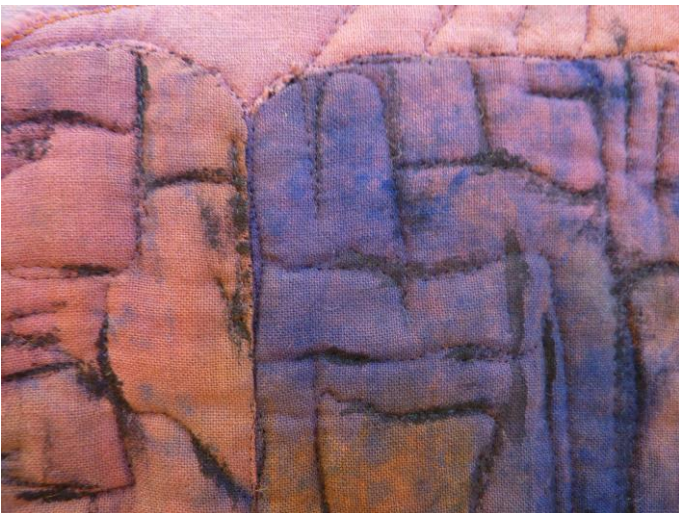




Gorge Sunset by Catherine Jensen, 44 cm x 36 cm

Inspired by memories of enjoying sunsets in the Murchison.

Hand-dyed and commercial fabrics. Freeform quilting and machine embroidery. Hand appliqué and freeform appliqué.





Murchison Rockhole by Catherine Jensen, 52 cm x 45 cm

Inspired by a waterhole in the Murchison.

Hand-dyed and commercial fabrics. Freeform quilting and machine embroidery Hand appliqué and freeform appliqué
The shiny look was achieved with sheer over the Shintoism piece used to depict the water. Painted white highlights on the water and black on the edge (to give depth).





Strata Story by Meg Cowey, 80 cm x 40 cm

Natural fissures and crevasses in the rock reveal the history of the land for millions of years. Fossils, ores and minerals provide colour and contrast within the iron-rich rock.

Silk, cotton, and rayon fabrics. Machine pieced and quilted.





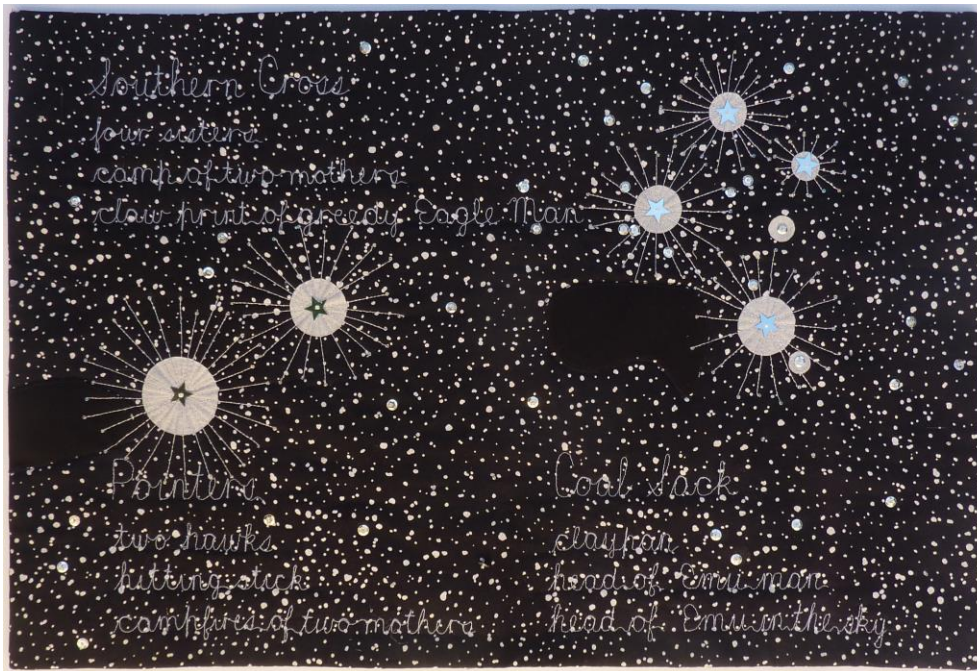
Southern Cross over Granite by Elizabeth Humphreys, 41.5 cm x 79 cm

Cotton fabric, hand and machine quilting and appliqué, trapunto, beads.

Small Items



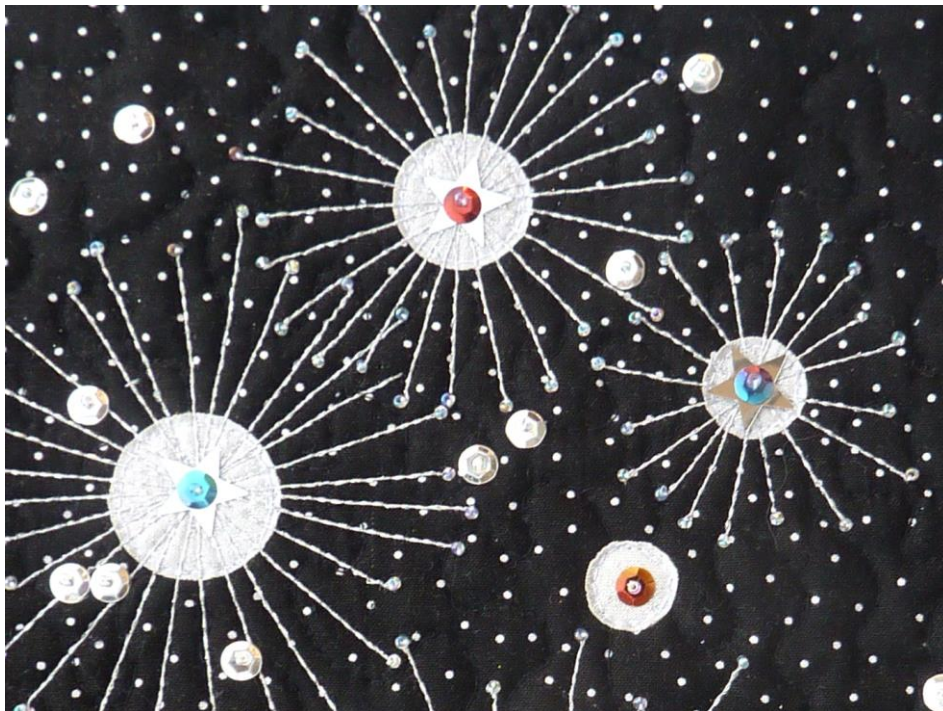
Zippered purses by Elizabeth Humphreys



Southern Cross, Pointers and Coal Sack by Pat Forster, 60 cm x 40 cm

Cotton and metallic printed fabrics, cotton-polyester and metallic threads, sequins, beads, wool/polyester wadding. Raw edge applique, free motion quilted text, free-motion machine quilting.

Areas of the circles are proportional to the brightness of the stars and coloured sequins at the centres denote star colour.. Standalone sequins denote less bright stars. The positions of stars on the quilt indicate the relative positions of them as seen from the Southern Hemisphere. The references to Aboriginal Culture are taken from the literature and are for Aboriginal Peoples of WA. In 2017, the International Astronomical Union assigned the name Ginna to the fifth brightest star in Southern Cross - the name used by the Wardaman people of the Northern Territory. Ginan means a red dilly-bag filled with special songs of knowledge. The brownish-red colour of the dilly bag is like the colour of the star, which is an orange giant that is 228 light years away.

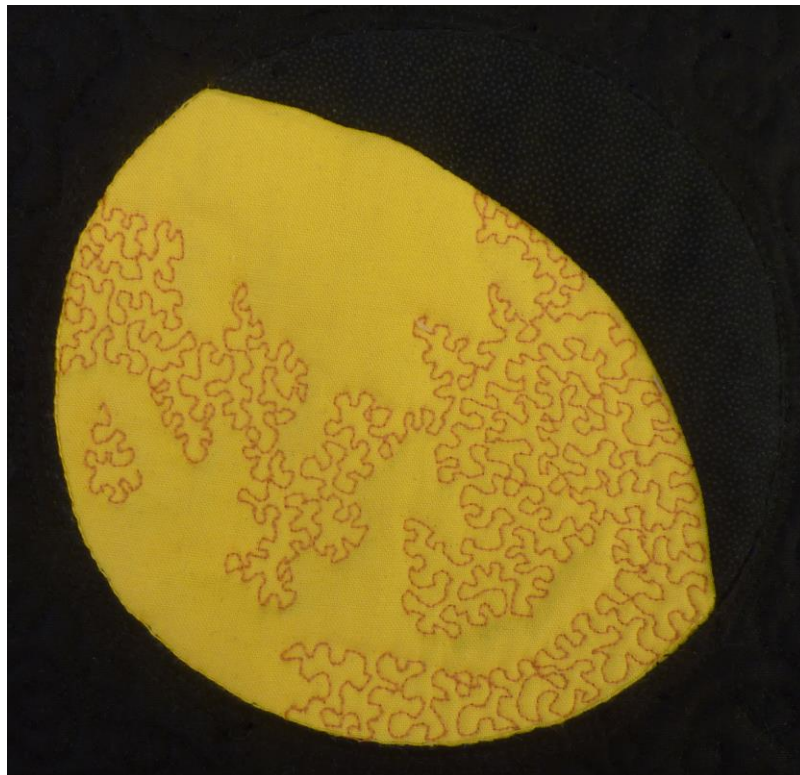


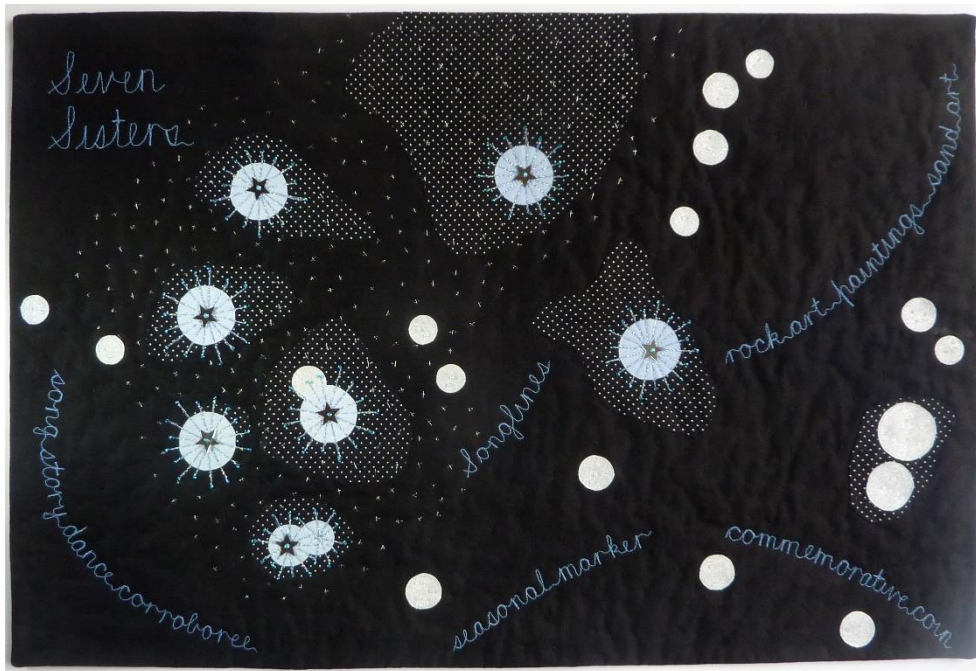


Moon by Pat Forster, 60 cm x 40 cm

Cotton fabrics, polyester cotton thread, wool/polyester wadding. Reverse applique, free-motion machine quilting including the text.

The Moon is as seen from the Southern Hemisphere – illuminating from left to right. The yellow starts as a crescent on the left, then fills half the circle (first quarter phase), then goes past first quarter (waxing gibbous phase as shown), next is full moon. Then the yellow recedes, with black filling the circle from the left. The moon illuminates from right to left in the Northern Hemisphere. The shapes of the quilted dark patches on the moon are authentic. The references to Aboriginal Culture are taken from the literature and are for Aboriginal Peoples of WA.

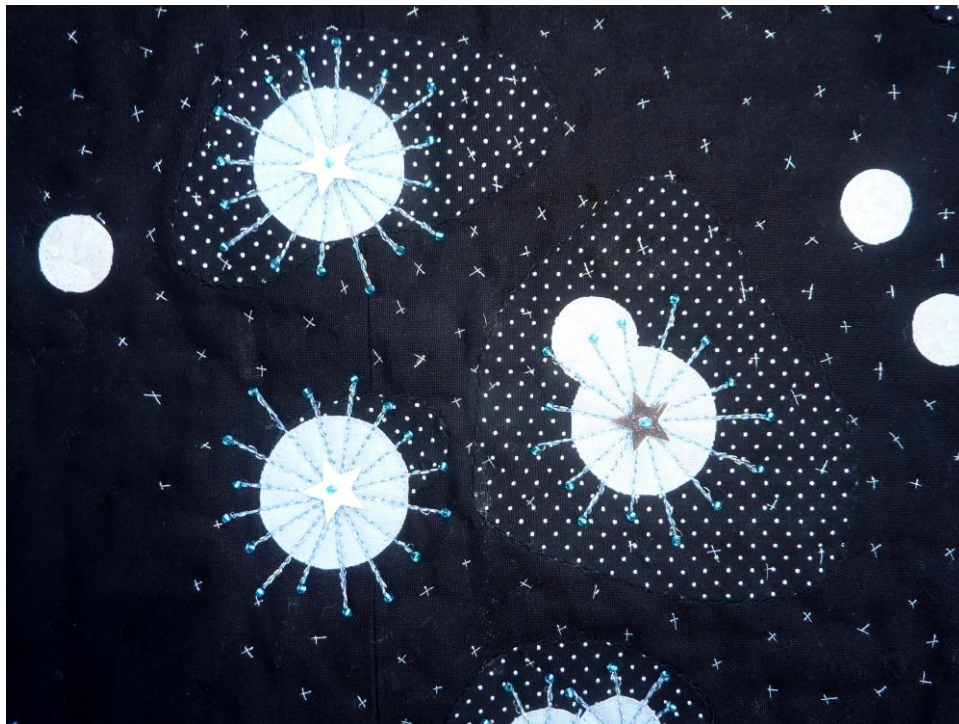




Seven Sisters by Pat Forster, 60 cm x 40 cm

Cotton and metallic printed fabrics, cotton-polyester and metallic threads, sequins, beads, wool/polyester wadding. Raw edge applique, free motion quilted text, hand quilting.

The orientation of the star cluster is as seen from the Southern Hemisphere, 30 degrees south, turned slightly anticlockwise to suit the rectangular quilt (artistic license!). The Pleiades star cluster is dominated by hot blue, luminous stars. Pleiades is the Greek name. Seven of brightest stars are referred to as the Seven Sisters and by other names by Aboriginal peoples (e.g., Napaljarri). They are depicted in blue on the quilt. One of the sisters is a double star (the pair of blue stars towards the bottom left of the quilt). Surrounding stars are represented as circles on the quilt – areas are proportional in size to the magnitude (i.e., brightness) of the stars. The two large bright stars that appear close to each other (right edge of the quilt) are the sisters' parents in ancient Greek mythology, but I haven't found them referenced in Aboriginal narratives.



Everlasting miniature quilts by Lana Lefroy, embellished with polished pebbles, 13 cm x 20 cm



Breakaway Everlasting



Calcrete Everlasting



Granite Everlasting



Gravel Everlasting



Quartz Everlasting

Card by Val York



Mount Magnet Shire Offices, applique



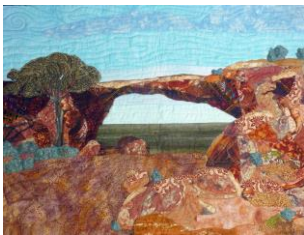
Layla's Country by Julie McAllister



Un-named by Elizabeth Humphreys

Photo Cards

Samples



C6 standard postage envelope



DL standard postage envelope



Square Envelope

PRICE LIST

MINERAL QUILTS ROCK

Ochres	Roberta Chantler	\$380
Exploration and Mining, Core Samples	Roberta Chantler	\$380
BIF	Robyn Clout	\$300
Rock Outcrop - Murchison	Meg Cowey	\$150
Strata Story	Meg Cowey	\$150
Calcrete Aquifer	Jan Fisher	\$250
Orbicules 2	Pat Forster	\$390
Quartz and Everlastings (Meeline Station)	Elizabeth Humphreys	\$320
The Granites with Fairy Martins and Parakeelya	Elizabeth Humphreys	\$320
Southern Cross over Granite (quilt)	Elizabeth Humphreys	\$280
Murchison Rockhole	Catherine Jensen	\$195
Gorge Sunset	Catherine Jensen	\$150
Banded Ironstone	Lana Lefroy	\$230
London Bridge	Lana Lefroy	\$390
Crossroads	Julie McAllister	\$420
Rock Collector, Western Bowerbird, Chlamydera guttata	Val York	\$300

Smaller items and Astro Quilts

Moon (quilt)	Pat Forster	\$80
Seven Sisters (quilt)	Pat Forster	\$80
Southern Cross, Pointers and Coal Sack (quilt)	Pat Forster	\$80
Photo cards with envelope	Pat Forster	\$4 each
Zippered purses	Elizabeth Humphreys	\$15 each
Small purple quilt	Elizabeth Humphreys	\$50
Miniature quilts Breakaway Everlasting Calcrete Everlasting Granite Everlasting Gravel Everlasting Quartz Everlasting	Lana Lefroy	\$25 each
Layla's Country (small quilt)	Julie McAllister	\$60
Mount Magnet Shire Offices card	Val York	\$15

2021 Mount Magnet Quilt Project Outcomes

Kalamunda Library, May 19

Powerpoint, talk and quilt display, for library week, using 2019 and 2021 Mount Magnet 'astro' quilts.

Show and Tell Presentation, Contemporary Quilt Group, August 13

Talk and quilt display.

Popup, WAQA August Sewing Day and Sewing Night Meetings, August 17, 18

Talk and quilt display.

Mount Magnet Astro Rocks Fest September, 17-19

Exhibition and sale in Mount Magnet Hall

In conjunction with the display of a large scroll created by artist Ben Beeton collaborating with botanical artist Mali Moir and Aboriginal Artists from Mount Magnet, the result of an Artist in Residence program. The scroll will be based on deep time (ancient) geology of the Murchison.

Publications

Cover photo, Quilters Quarterly September 2021, Calcrete Aquifer by Jan Fisher

Embellish, September 2021, Issue 47, *Great Observers of the Night Sky* (Milky Way, Moon and Seven Sisters),

Embellish. *Mineral Quilts Rock*, submitted. 07/09/21

The Making of a Quilt

from Meg Cowey's website <https://ourhousequilts.wordpress.com/author/jbesoin/> 03/07/2021

Rock Outcrop – Murchison



Rock Outcrop detail

As a member of WAQA City and Country Quilters, I created a small quilt to be shown at [Mount Magnet Astro Rocks Fest 2021](#).

I was inspired by the red/orange rock of the Murchison area and Mount Magnet in particular. I didn't strive to make a 'photo' quilt of Mt Magnet, but a generalised view of rock outcrops in the area. I tried to position the viewer as near the base of one of the rock faces.

I drew a full-sized, rough sketch on tracing paper, and then cut out various pieces to use as templates for my red/brown/orange fabrics.



Positioning the rocks on background sky

The background was a blue piece of homespun with bleached clouds (in my stash from a previous project- what luck!)



Ironed in place, but no stitching yet. Spray glued wadding and backing.

The rocks and then the sandy ground were visofixed in place. The quilting will stitch four layers (rocks, background, wadding, and backing) together.

Each rock piece was stitched around its perimeter to keep it secure. Then the quilting created rock texture and sandy ground.



Finished quilt 78cm x 39cm
Place: Mount Magnet Town Hall
Dates: 17-19 September 2021

